

# **Nokia Customer Care**

## **5 - Disassembly/ Reassembly Instructions**

[This page left intentionally blank]

**Table of Contents**

	<b>Page No</b>
<b>RAE-6/RA-4 Disassembly Instructions .....</b>	<b>5</b>
<b>Reassembly .....</b>	<b>14</b>

[This page left intentionally blank]

## RAE-6/RA-4 Disassembly Instructions

(Also see the video clips on care point.)



1.) Protect the window with a film.



2.) Fit protective film to the **LCD Module**.



3.) Press down the **Latch** and open the **Battery Cover**.



4.) Be sure that the battery is removed and then continue with disassembly. Note to put back the **Sealing Tape** after the re-assembly.



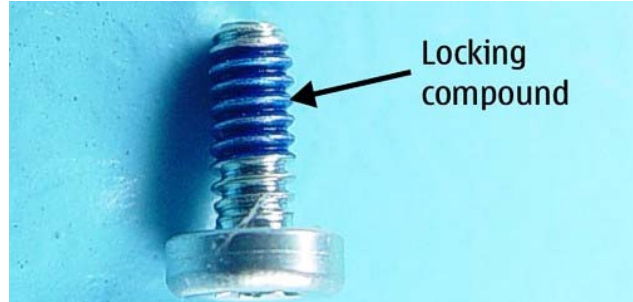
5.) Push the **Latch** and open the **A-Cover Assy**.



6.) Protect the **LCD Module** with a film.



7.) Remove the **Keypad**. Note the guide openings on the **UI Shield Assy** when assembling the **Keypad**.



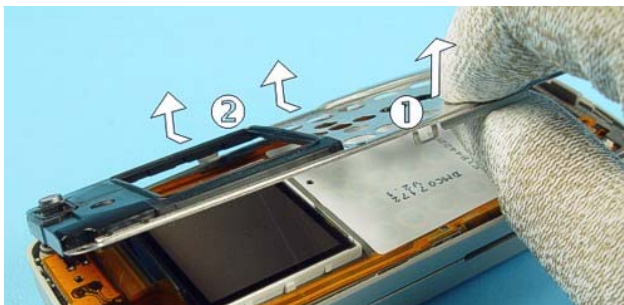
8.) The screws are not reusable.



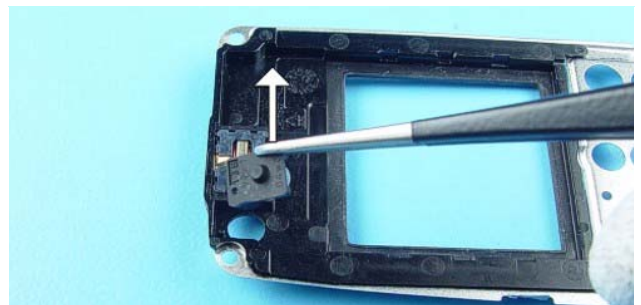
9.) Unscrew the four, Torx Plus<sup>®</sup> size 6 screws in the shown order. **Always use new screws when re-assembling! For assembly, reverse the order and use a Torx Plus<sup>®</sup> size 6 driver with a torque setting of 25Ncm.**



10.) Open the flap carefully by using the dental tool.

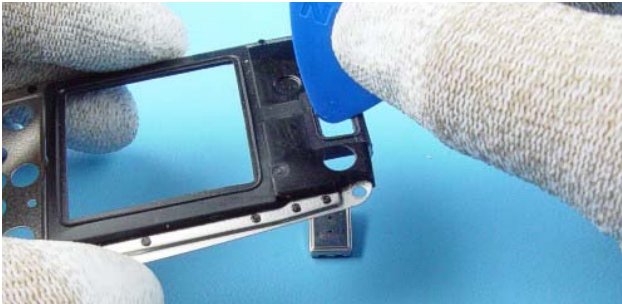


11.) Remove the **SHIELD** in shown order.

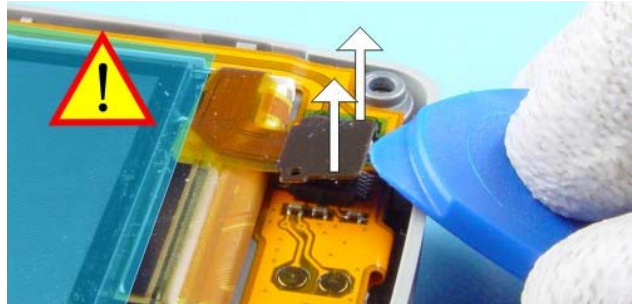


12.) Remove the **Power Key**.

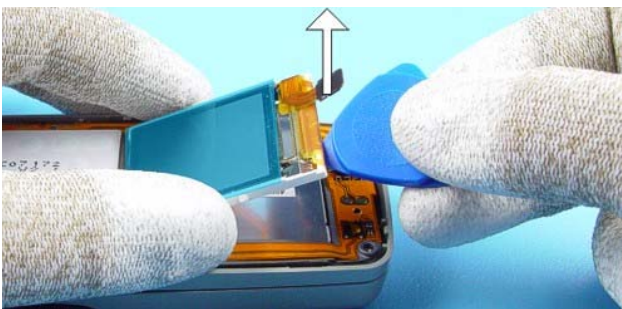




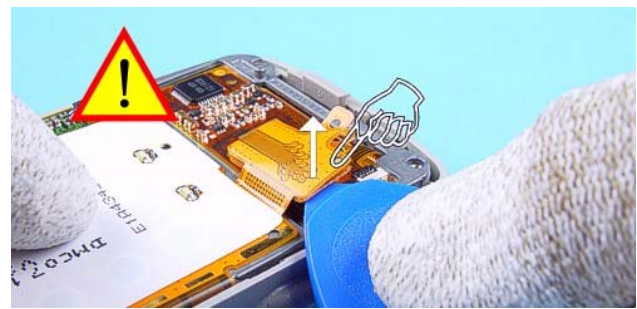
13.) Push out the **Speaker** with SRT-6.



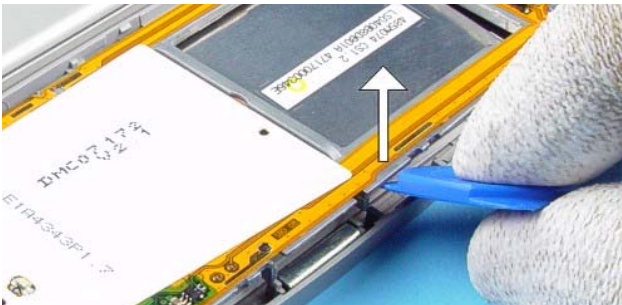
14.) Open the LCD connector carefully.



15.) Lift and remove the **LCD Module**.



16.) From shown side only, open the UI Module connector carefully.



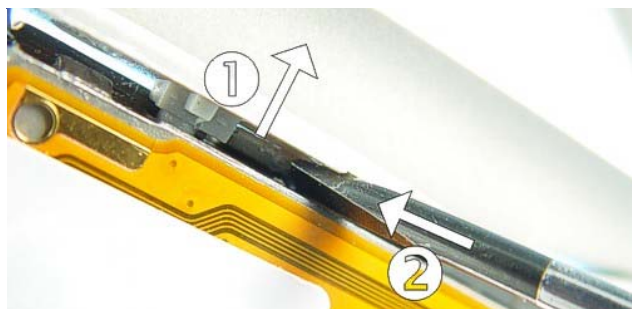
17.) Use the SRT-6 as a lever to lift the **Shield**.



18.) Hold the unit as shown in the picture.



19.) Use a slotted screwdriver to unlock the snap.



20.) The snap of the C-Cover is locked to the Shield. Bend the snap a bit in the shown direction and push it out carefully.

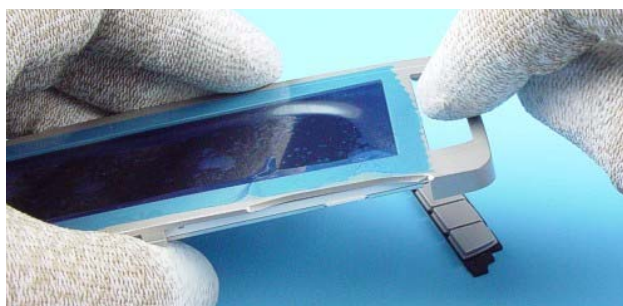




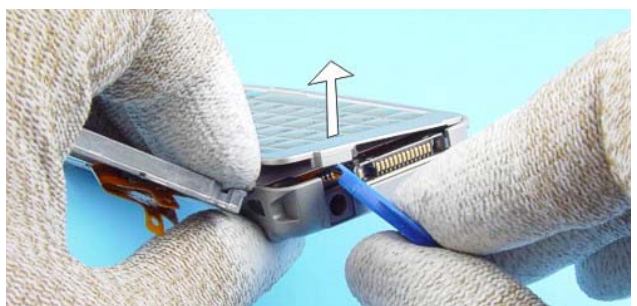
21.) Press out the **C-Cover Assy** carefully.



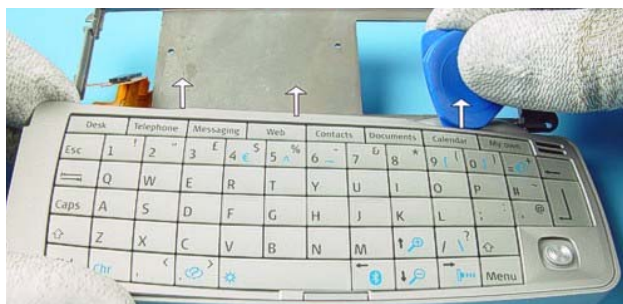
22.) Take away the **C-Cover Assy**.



23.) The **Command Buttons** drop out by pushing them out.



24.) Place the SRT-6 between **Qwerty Keypad** and the **DC-Jack** and lift the **Qwerty Keypad** carefully.



25.) Open the hooks carefully by using the SRT-6 as a lever.



26.) Unlock the hooks along the edge of the **Qwerty Keypad** as shown.



27.) The same procedure on the shown side.



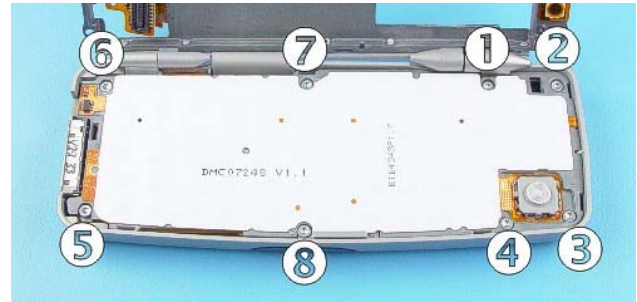
28.) Now, the **Qwerty Keypad** can be removed.



For assembly only!



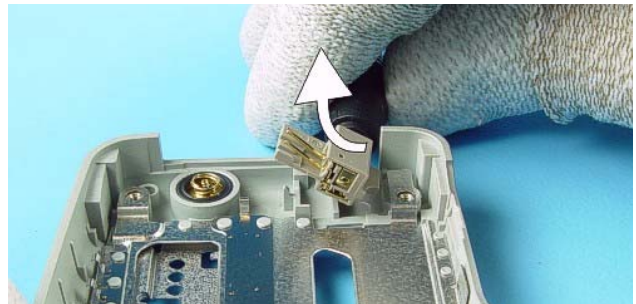
Always use a new **Adhesive Qwerty Keypad** when re-assembling!



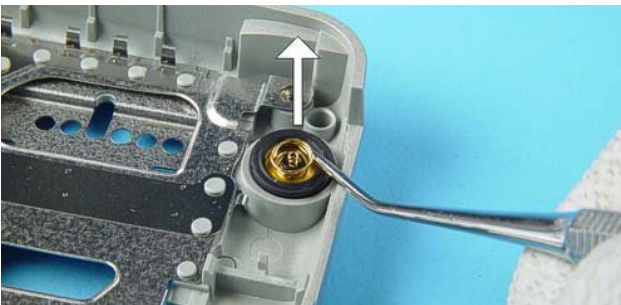
29.) Unscrew the eight, Torx Plus® size 6 screws in the order shown. **Always use new screws when re-assembling!** For assembly, reverse the order and use a Torx Plus® size 6 driver with a torque setting of 25Ncm.



30.) Remove the **Chassis Assy.** Always start from the antenna side.



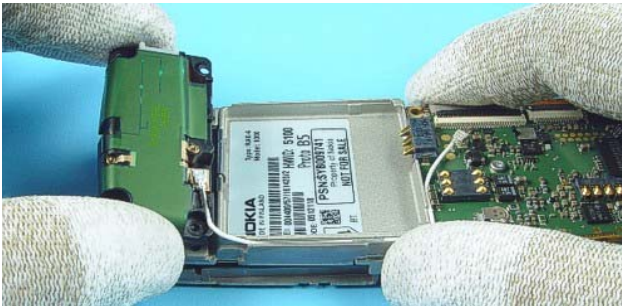
31.) Remove the **DC-Jack** by using the DC-plug.



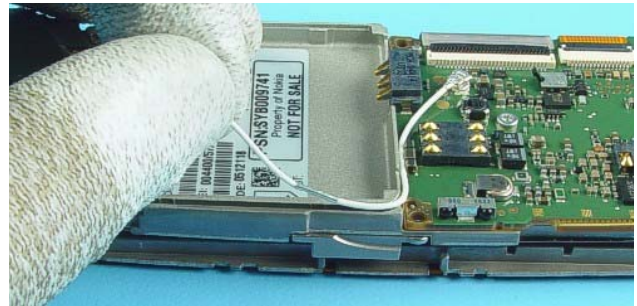
32.) Remove the **Microphone** by using the dental tool.



33.) Note the placement of the **RF Coax Cable** before continuing the disassembly.



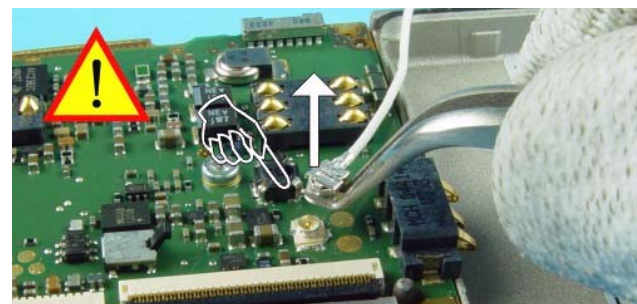
34.) First remove the **Antenna Assy**. **Do Not open the Antenna RF connector!**



35.) Remove the **RF Coax Cable** from its guidance.

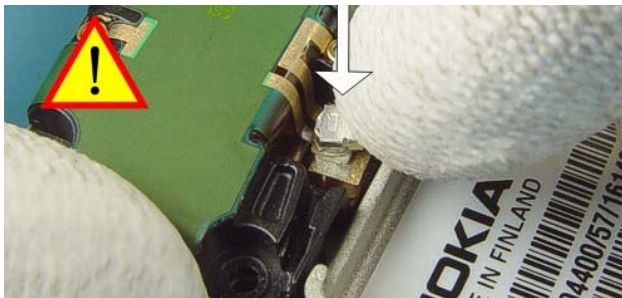


36.) Do not pull up on the cable.



37.) Lift RF connector straight up by using angled tweezers, do not bend it sideways.

**For Repair only!**



**RF Coax Cable** cannot be disconnected from the **Antenna**. If **Antenna Assy** or **RF Coax Cable** is defect, use always a new **Antenna Assy** and a new **Coax Cable**. First place the **Antenna Assy** onto the **Shield** and than connect the **RF Coax Cable**.



38.) Unlock the flex connector with SRT-6 carefully.





Unlock the connector carefully.



Unscrew the Torx Plus® size 6 screw.



Turn the Engine Module. Take care of the **RF Gasket**.



Remove the flex from the connector carefully.

**For assembly only!**



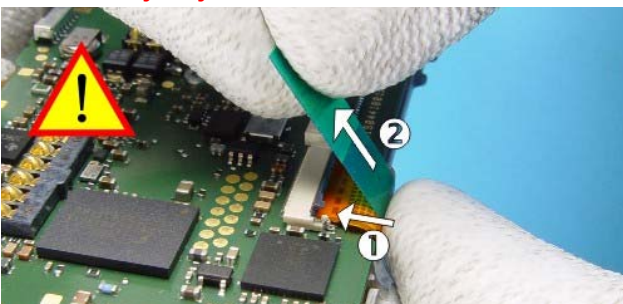
Place the Engine Module onto the **Shield**. Take care of the **RF Gasket**.

**For assembly only!**



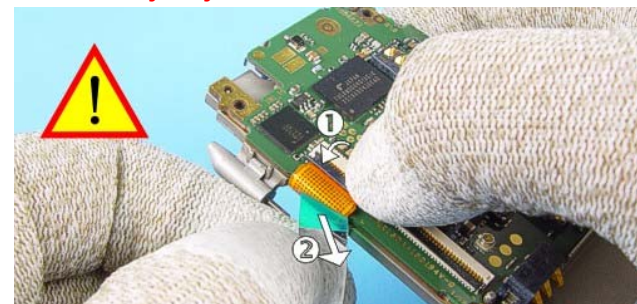
Always use new screw when re-assembling!  
For assembly use a Torx Plus® size 6 driver with a torque setting of 25Ncm.

**For assembly only!**



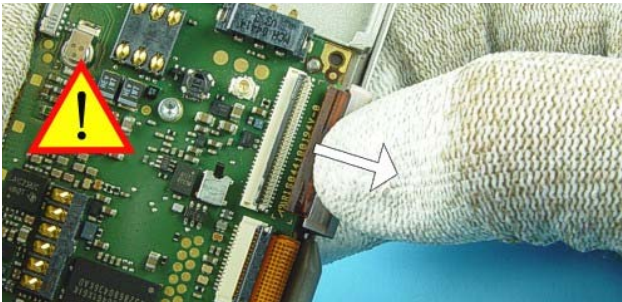
Put the flex into the connector carefully by using the flex assembly tape.

**For assembly only!**



Lock the connector carefully and remove the flex assembly tape.

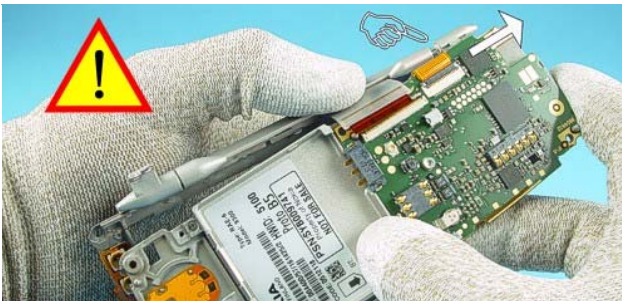




39.) Remove the flex from the connector carefully as shown in the picture. Do not fold the flex foil



40.) Unscrew the Torx Plus® size 6 screw.

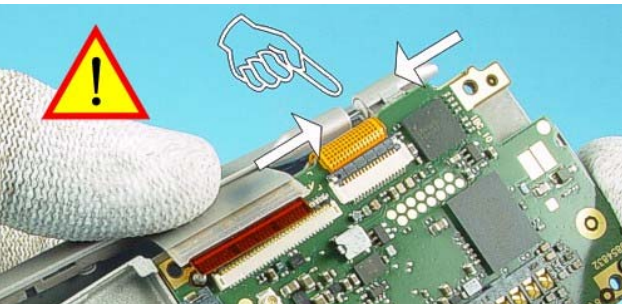


41.) Separate the **Chassis** from the **Shield** carefully.



42.) Swap unit

For assembly only!



Assemble the **Chassis**. Be careful and do not damage the **Hinge Pin** and the flex.

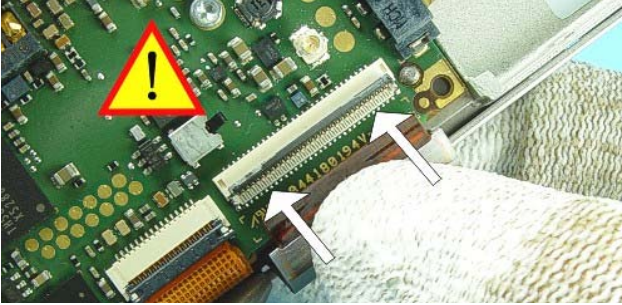
For assembly only!



For assembly use a Torx Plus® size 6 driver with a torque setting of 22Ncm.

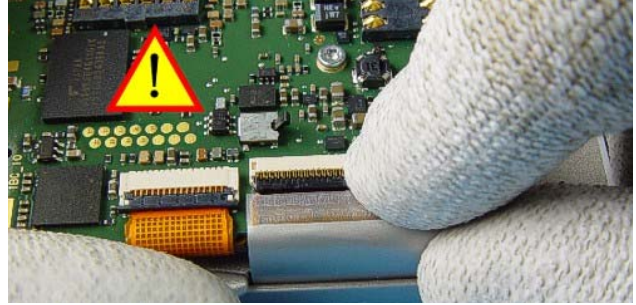


For assembly only!



Place the flex into the connector carefully. Be sure that the contacts are clean when connecting the flex.

For assembly only!



Close the connector carefully.

## **Reassembly**

---

Reassembly should be in reverse order to disassembly unless otherwise stated.